

**INTRODUCTION**

The HCPC has assessed the length of time that International route registrants remained registered for following their first registration. This analysis is hoped to contribute to wider workforce planning efforts.

**METHODS**

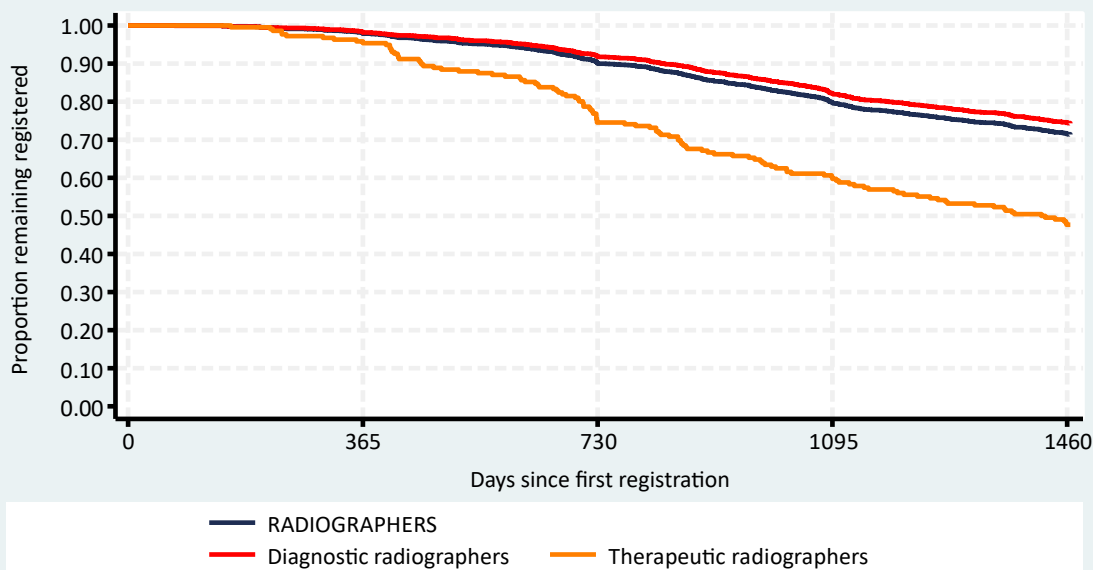
All new international route Radiographers first registering between 01 Dec 2013 and 31 Nov 2017 were included (n=2,056) and their registration status at least four years later determined. The registrant's nationalities were grouped by World Bank income categories as at 2015 into High Income Countries (HIC) or Low & Middle Income Countries (LMIC). The Kaplan-Meier method was used to estimate the percent remaining registered and the corresponding 95% confidence intervals for those estimates.

Where registrants hold more than one modality, they are counted in each of those modalities. Therefore the sum of the modalities may be greater than the all profession total. Retention rates have only been calculated for modalities and subgroups with at least 20 registrants.

**RESULTS**

**Overall international route retention**

Profession	n	Retention rate		For further details
		%	95% CI	
Radiographers	2,056	71.5	69.5 to 73.4	Whole profession factsheet
Diagnostic radiographers	1,858	74.5	72.4 to 76.4	Page 2 of this factsheet
Therapeutic radiographers	216	47.7	40.9 to 54.2	Page 3 of this factsheet



**Table 1: Comparison of routes and nationalities, Diagnostic radiographers**

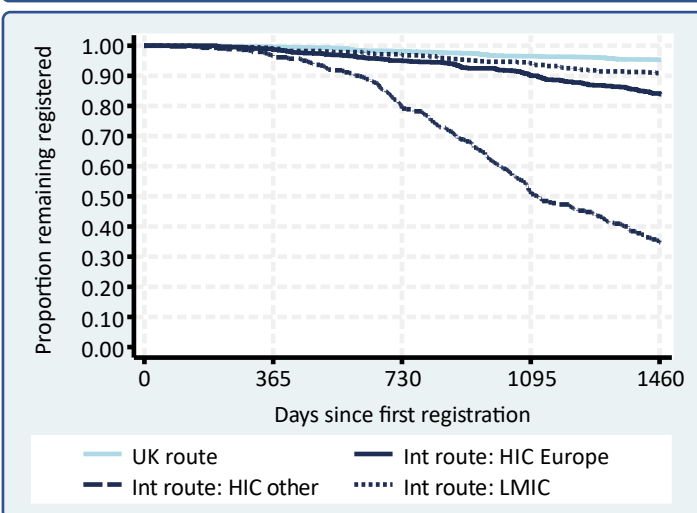
Route and country group	n	%	Retention rate	
			%	95% CI
UK route	4,322	70	95.3	94.7 to 95.9
Intl. route: HIC Europe	852	14	84.2	81.5 to 86.4
Intl. route: HIC other	441	7	34.8	30.4 to 39.3
Intl. route: LMIC	565	9	90.9	88.2 to 93.0

**Table 2: International route demographic groups, Diagnostic radiographers**

Demographic group	n	%	Retention rate	
			%	95% CI
HIC Europe: Female 20-29	325	17	85.2	80.9 to 88.7
HIC Europe: Female 30+	105	6	79.1	70.0 to 85.7
HIC Europe: Male 20-29	274	15	82.5	77.4 to 86.5
HIC Europe: Male 30+	148	8	88.5	82.2 to 92.7
HIC other: Female 20-29	294	16	30.8	25.6 to 36.1
HIC other: Female 30+	48	3	47.9	33.3 to 61.1
HIC other: Male 20-29	75	4	30.7	20.7 to 41.2
HIC other: Male 30+	24	1	70.8	48.4 to 84.9
LMIC: Female 20-29	143	8	89.5	83.2 to 93.5
LMIC: Female 30+	119	6	89.0	81.8 to 93.5
LMIC: Male 20-29	147	8	93.9	88.5 to 96.8
LMIC: Male 30+	156	8	91.0	85.2 to 94.6

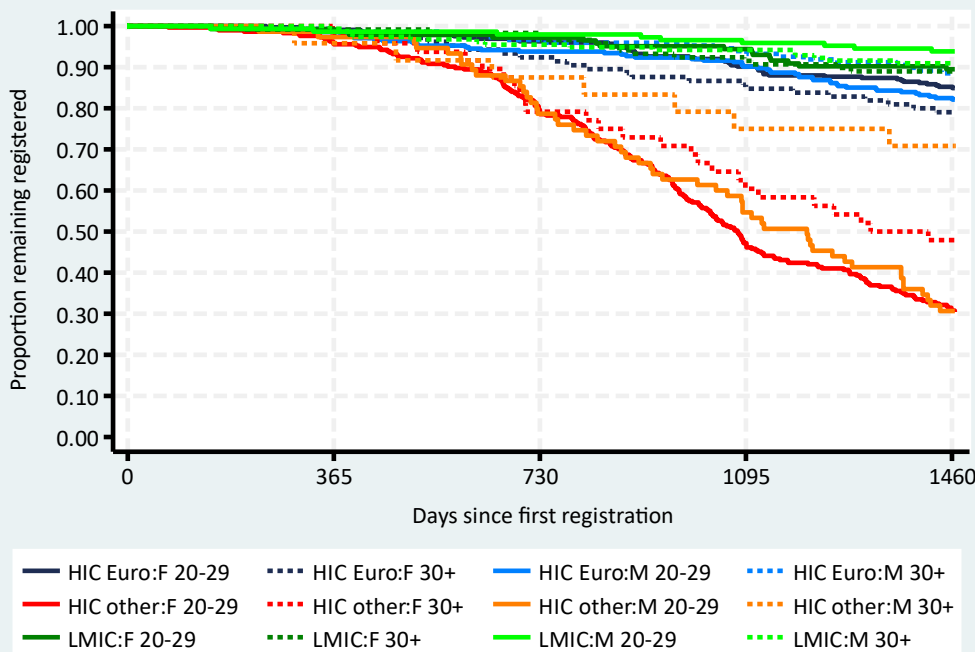
**Table 3: Largest international route nationalities, Diagnostic radiographers**

Country of nationality	n	%	Retention rate	
			%	95% CI
Portugal	315	17	91.8	88.1 to 94.3
Italy	310	17	80.7	75.8 to 84.6
Australia	292	16	35.1	29.7 to 40.6
Philippines	137	7	94.2	88.7 to 97.0
Nigeria	128	7	93.7	87.8 to 96.8
India	112	6	96.4	90.8 to 98.6
New Zealand	83	4	22.9	14.6 to 32.4
Spain	40	2	77.5	61.2 to 87.6
Poland	39	2	82.1	66.0 to 91.0
United Kingdom	37	2	86.5	70.5 to 94.1



**International route demographic groups**

As has been seen in other professions, international registrants from High Income Countries outside of Europe (HIC other) have the lowest retention rates. And in that country group, younger registrants have lower retention rates than older registrants. The best retention rates are in LMIC registrants. See Tables 1 & 2 for further details.



**Table 1: Comparison of routes and nationalities, Therapeutic radiographers**

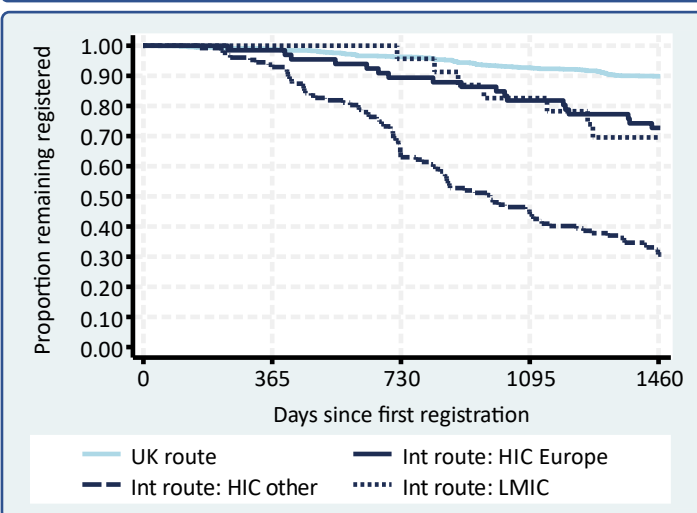
Route and country group	n	%	Retention rate	
			%	95% CI
UK route	1,214	85	89.9	88.0 to 91.4
Intl. route: HIC Europe	66	5	72.7	60.3 to 81.9
Intl. route: HIC other	127	9	30.7	22.9 to 38.8
Intl. route: LMIC	23	2	69.6	46.6 to 84.2

**Table 2: International route demographic groups, Therapeutic radiographers**

Demographic group	n	%	Retention rate	
			%	95% CI
HIC Europe: Female 20-29	42	19	76.2	60.3 to 86.4
HIC Europe: Female 30+	8	4	-	-
HIC Europe: Male 20-29	9	4	-	-
HIC Europe: Male 30+	7	3	-	-
HIC other: Female 20-29	86	40	30.2	20.9 to 40.1
HIC other: Female 30+	10	5	-	-
HIC other: Male 20-29	29	13	37.9	20.9 to 54.9
HIC other: Male 30+	2	1	-	-
LMIC: Female 20-29	12	6	-	-
LMIC: Female 30+	4	2	-	-
LMIC: Male 20-29	4	2	-	-
LMIC: Male 30+	3	1	-	-

**Table 3: Largest international route nationalities, Therapeutic radiographers**

Country of nationality	n	%	Retention rate	
			%	95% CI
Australia	52	24	32.7	20.5 to 45.4
Canada	44	20	20.5	10.1 to 33.3
Portugal	31	14	74.2	54.0 to 86.2
New Zealand	27	13	44.4	25.6 to 61.8
Republic of Ireland	11	5	-	-
India	8	4	-	-
South Africa	7	3	-	-
Spain	6	3	-	-
Italy	5	2	-	-
United States	4	2	-	-



**International route demographic groups**

As has been seen in other professions, international registrants from High Income Countries outside of Europe (HIC other) have the lowest retention rates. There were relatively few registrants from LMIC for this modality, and fewer registrants in the older age groups. See Tables 1 & 2 for further details.

